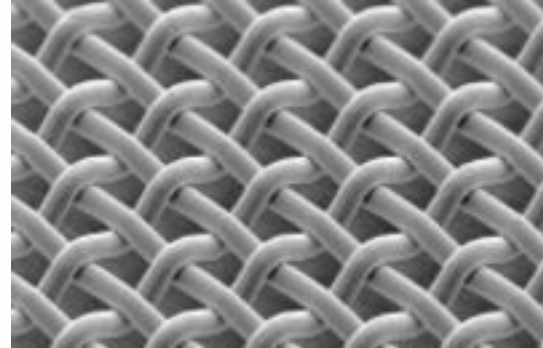


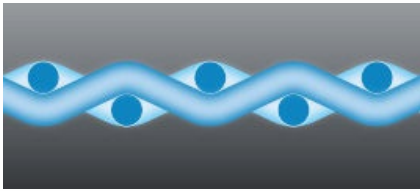
product solution

Asada Standard-Type BS Metal Mesh

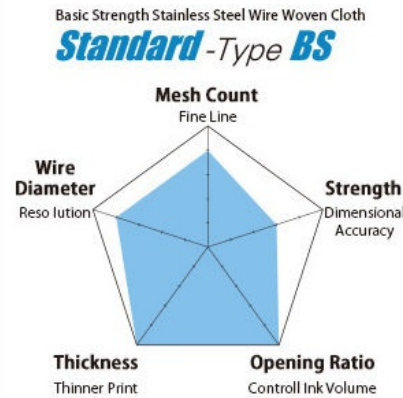
BS Mesh is a standard mesh with a 25% higher tensile strength than conventional stainless steel mesh. As a standard mesh for screen printing, it has been adopted for wide use in applications such as fine line or thin deposit printing for MLCC.



PRODUCT IMAGES



Cross Section View



BS Mesh Characteristics Chart

ITEM DETAILS

MESH CODE	MESH COUNT /in	MESH COUNT /cm	WIRE DIAMETER in	WIRE DIAMETER mm	MESH OPENING in	MESH OPENING mm	OPEN AREA %	STANDARD THICKNESS μ m	LIGHT CALENDERING THICKNESS μ m	MEDIUM CALENDERING THICKNESS μ m	HEAVY CALENDERING THICKNESS μ m
BS-500/16	500	197	0.0006	0.016	0.0014	0.035	47	36 \pm 2	25 \pm 2	20 \pm 1	17 \pm 1
BS-500/19	500	197	0.0007	0.019	0.0013	0.032	39	41 \pm 2	30 \pm 2	25 \pm 1	19 \pm 1
BS-500/18	500	197	0.0007	0.018	0.0013	0.033	42	39 \pm 2	30 \pm 2	25 \pm 1	19 \pm 1
BS-400/18	400	157	0.0007	0.018	0.0018	0.046	51	39 \pm 2	30 \pm 2	23 \pm 1	N/A
BS-400/19	400	157	0.0007	0.019	0.0018	0.045	49	39 \pm 2	30 \pm 2	23 \pm 1	N/A

product solution

Asada Standard-Type BS Metal Mesh

MESH CODE	MESH COUNT /in	MESH COUNT /cm	WIRE DIAMETER in	WIRE DIAMETER mm	MESH OPENING in	MESH OPENING mm	OPEN AREA %	STANDARD THICKNESS µm	LIGHT CALENDERING THICKNESS µm	MEDIUM CALENDERING THICKNESS µm	HEAVY CALENDERING THICKNESS µm
BS-400/23	400	157	0.0009	0.023	0.0016	0.041	41	55±2	40±2	35±1	24±1
BS-400/25	400	157	0.001	0.025	0.0015	0.039	37	57±2	49±2	40±1	N/A
BS-325/23	325	128	0.0009	0.023	0.0022	0.055	50	51±2	41±2	37±2	24±1
BS-325/28	325	128	0.0011	0.028	0.002	0.05	41	62±2	55±2	47±1	N/A
BS-325/30	325	128	0.0012	0.03	0.0019	0.048	38	62±2	60±2	42±1	N/A
BS-300/30	300	118	0.0012	0.03	0.0022	0.055	42	68±2	59±2	44±1	N/A
BS-280/30	280	110	0.0012	0.03	0.0024	0.061	45	64±2	59±2	49±2	N/A
BS-270/35	270	106	0.0014	0.035	0.0023	0.059	39	77±2	70±2	58±2	N/A
BS-250/28	250	98	0.0011	0.028	0.0029	0.074	52	56±2	53±2	45±2	N/A
BS-250/30	250	98	0.0012	0.03	0.0028	0.072	50	62±2	58±2	45±2	N/A
BS-250/35	250	98	0.0014	0.035	0.0026	0.067	43	78±2	64±2	55±2	N/A
BS-250/40	250	98	0.0016	0.04	0.0024	0.062	37	90±3	86±2	67±2	N/A
BS-230/28	230	91	0.0011	0.028	0.0032	0.082	56	56±3	54±2	45±2	N/A
BS-230/35	230	91	0.0014	0.035	0.003	0.075	47	75±3	67±2	56±2	N/A
BS-200/30	200	79	0.0012	0.003	0.0038	0.097	58	62±2	58±2	45±2	N/A
BS-200/40	200	79	0.0016	0.04	0.0034	0.087	47	82±3	77±2	65±2	N/A
BS-200/53	200	79	0.0021	0.0053	0.0029	0.074	34	105±4	N/A	N/A	N/A
BS-180/45	180	71	0.0018	0.045	0.0038	0.096	46	98±3	N/A	N/A	N/A
BS-165/45	165	65	0.0018	0.045	0.0043	0.109	50	95±3	N/A	N/A	N/A
BS-165/50	165	65	0.002	0.05	0.0041	0.104	46	102±3	N/A	N/A	N/A
BS-150/65	150	65	0.0026	0.065	0.0041	0.103	37	133±3	N/A	N/A	N/A