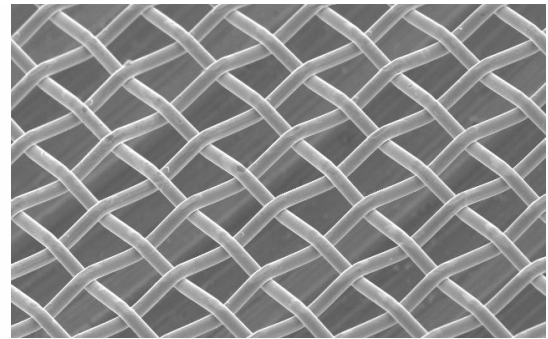


product solution

Asada Supermesh-Type HS & SHS Metal Mesh

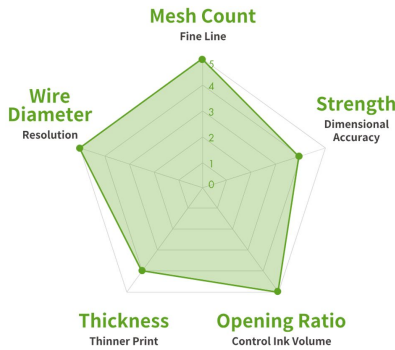
HS & SHS Mesh is suitable for high viscosity paste. The wire material has 3 times higher strength than BS and only 5% elongation. The wire thread is woven at an open ratio of 60%. It is appropriate for solder or paste laydown.



PRODUCT IMAGES



Asada Supermesh-Type HS & SHS Metal Mesh Cross Section View



Asada Supermesh-Type HS & SHS Metal Mesh Characteristics Chart

product solution

Asada Supermesh-Type HS & SHS Metal Mesh

ITEM DETAILS

MESH CODE	MESH COUNT /in	MESH COUNT /cm	WIRE DIAMETER in	WIRE DIAMETER mm	MESH OPENING in	MESH OPENING mm	OPEN AREA %	STANDARD THICKNESS μ m	LIGHT CALENDERING THICKNESS μ m	MEDIUM CALENDERING THICKNESS μ m	HEAVY CALENDERING THICKNESS μ m
SHS-380/14	380	150	0.0006	0.014	0.0021	0.053	62	32 \pm 2	26 \pm 2	20 \pm 1	14 \pm 1
SHS-360/16	360	142	0.0006	0.016	0.0022	0.055	60	36 \pm 3	32 \pm 2	20 \pm 1	16 \pm 1
SHS-325/16	325	128	0.0006	0.016	0.0024	0.062	63	35 \pm 3	32 \pm 2	20 \pm 1	18 \pm 1
SHS-290/20	290	114	0.0008	0.02	0.0027	0.068	60	45 \pm 3	36 \pm 2	30 \pm 1	22 \pm 1
SHS-230/25	230	91	0.001	0.025	0.0033	0.085	60	55 \pm 3	N/A	N/A	N/A
HS-380/14	380	150	0.0006	0.014	0.0021	0.053	62	33 \pm 2	26 \pm 2	20 \pm 1	14 \pm 1
HS-360/16	360	142	0.0006	0.016	0.0022	0.055	60	36 \pm 3	32 \pm 2	20 \pm 1	17 \pm 1
HS-325/16	325	128	0.0006	0.016	0.0024	0.062	63	35 \pm 2	32 \pm 2	20 \pm 1	17 \pm 1
HS-290/20	290	114	0.0008	0.02	0.0027	0.068	60	45 \pm 2	36 \pm 2	30 \pm 1	21 \pm 1
HS-250/20	250	98	0.0008	0.02	0.0032	0.082	65	44 \pm 2	N/A	N/A	N/A
HS-230/25	230	91	0.001	0.025	0.0033	0.085	60	55 \pm 2	N/A	N/A	N/A
HS-D500/19	500	197	0.0007	0.019	0.0013	0.032	39	45 \pm 2	N/A	35 \pm 2	25 \pm 1
HS-D400/20	400	157	0.0008	0.02	0.0017	0.044	47	45 \pm 2	39 \pm 2	35 \pm 2	N/A
HS-D325/24	325	128	0.0009	0.024	0.0021	0.054	48	55 \pm 2	N/A	45 \pm 2	N/A