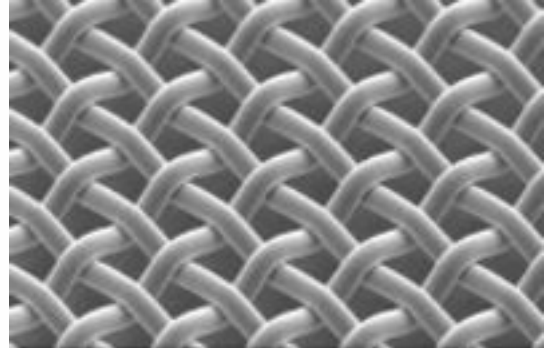


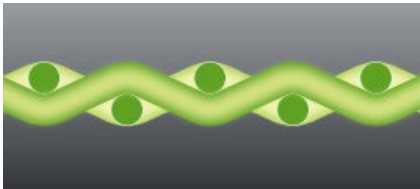
product solution

Asada Hardmesh-Type MS Metal Mesh

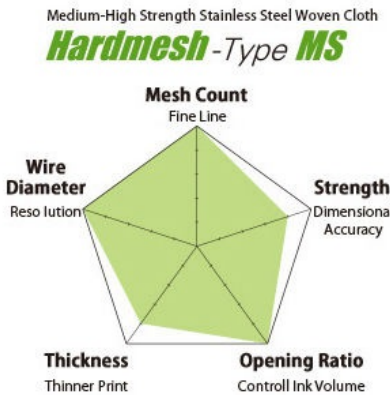
MS Mesh features excellent dimensional accuracy and printing durability by using material with 30% improved tensile strength over standard BS Mesh. MS Mesh is designed for fine line printing and can lay down 30 micron electrode lines in touch panel printing. Additionally, newly developed 640 and 740 mesh are ideal for MLCC applications.



PRODUCT IMAGES



Cross Section View



MS Mesh Characteristics Chart

product solution

Asada Hardmesh-Type MS Metal Mesh

ITEM DETAILS

MESH CODE	MESH COUNT /in	MESH COUNT /cm	WIRE DIAMETER in	WIRE DIAMETER mm	MESH OPENING in	MESH OPENING mm	OPEN AREA %	STANDARD THICKNESS μm	LIGHT CALENDERING THICKNESS μm	MEDIUM CALENDERING THICKNESS μm	HEAVY CALENDERING THICKNESS μm
MS-730/13	730	287	0.0005	0.013	0.0009	0.022	40	28 \pm 2	N/A	N/A	15 \pm 1
MS-640/15	640	252	0.0006	0.015	0.001	0.025	39	35 \pm 2	25 \pm 1	21 \pm 1	17 \pm 1
MS-400/19	400	157	0.0007	0.019	0.0018	0.045	49	39 \pm 2	30 \pm 2	23 \pm 1	18 \pm 1
MS-400/23	400	157	0.0009	0.023	0.0016	0.041	41	55 \pm 2	39 \pm 1	35 \pm 1	26 \pm 1
MS-325/24	325	128	0.0009	0.024	0.0021	0.054	48	51 \pm 2	44 \pm 2	38 \pm 2	N/A
MS-325/28	325	128	0.0011	0.028	0.002	0.05	41	58 \pm 2	55 \pm 2	45 \pm 2	N/A
MS-280/25	280	110	0.001	0.025	0.0026	0.066	52	51 \pm 2	48 \pm 2	40 \pm 1	N/A
MS-250/30	250	98	0.0012	0.03	0.0028	0.072	50	62 \pm 2	58 \pm 2	45 \pm 2	28 \pm 1