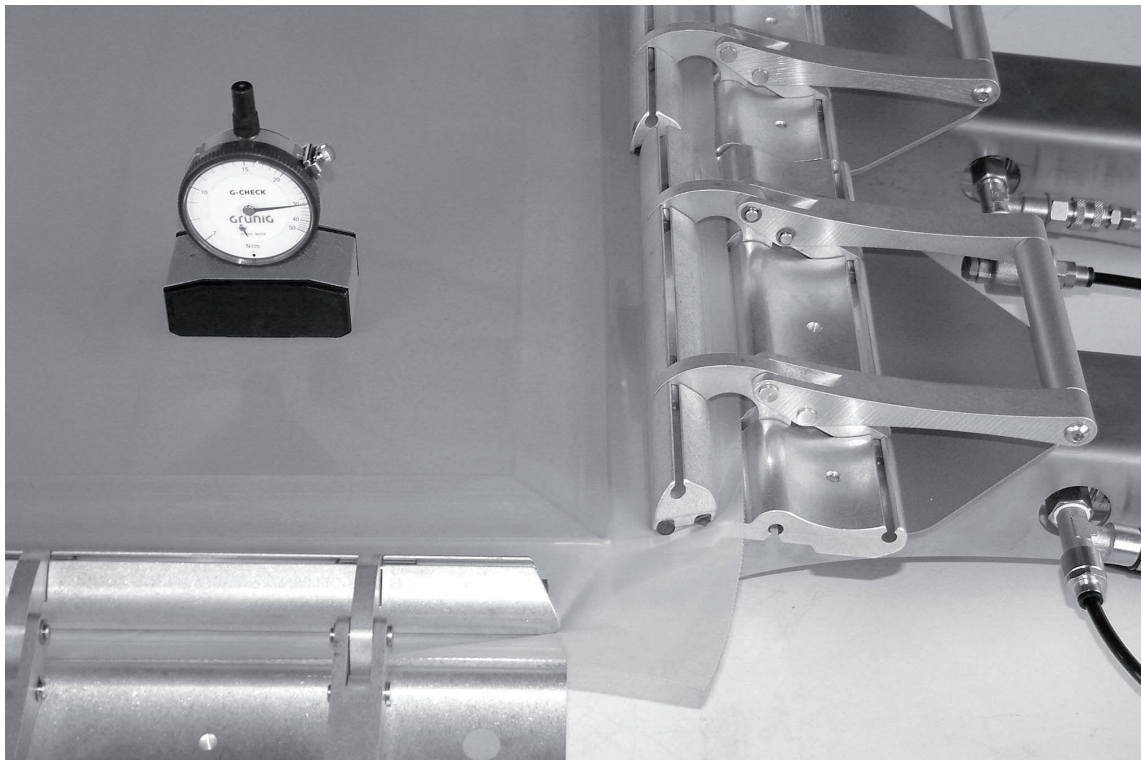


The G-STRETCH 202 is a cost efficient solution, suitable for all the desired stretching process



G-STRETCH 202

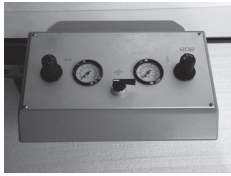
GRÜNIG

Grünig-Interscreen AG
Ringgenmatt 14
CH-3150 Schwarzenburg
Switzerland

Phone +41 31 734 2600
Fax +41 31 734 2601
www.grunig.ch
mail@grunig.ch

G-STRETCH 202

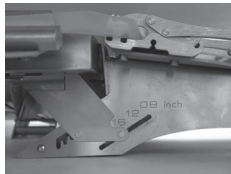
Pneumatic duplex clamps



Control panel



Automatic stretching A2



Height adjustment



DUPLEX stretching clamp

Particular characteristics

- Pneumatic stretching system for all mesh types currently available on the market
- Cost-efficient entry-level model for automatic mesh stretching.
- Modular extension possible in 250 mm increments per side (warp + weft)
- Stretching stroke per clamp 80 mm, totally 160 mm for warp and weft direction
- The simple and user-friendly control module with two separate regulator circuits for the X axis and the Y axis allows individual adjustment of the stretching force and stretching speed.
- The pneumatic system guarantees an efficient work process. The desired stretching power must only be adjusted for the first screen of a series.
- While the mesh is being stretched, the screen frame is prestressed with the same counter-stretching force.
- The width of a stretching clamp is 250 mm.
- The frame saddle of each stretching clamp can be easily adjusted in 5 mm increments to meet the frame profile heights between 20 and 55 mm.
- During the stretching process the mesh is automatically pulled over the frame. Once the stretching process is completed, the mesh can be directly glued onto the frame.
- In the event of mesh tearing, the retaining straps prevent the stretching clamps from bouncing back.
- Ergonomical design and high-quality materials such as stainless steel V2A and aluminium.

Execution A1

- Thanks to the manual control desk, the stretching values for both axes can be programmed independently from each other. The stretching process is controlled via a central switch.

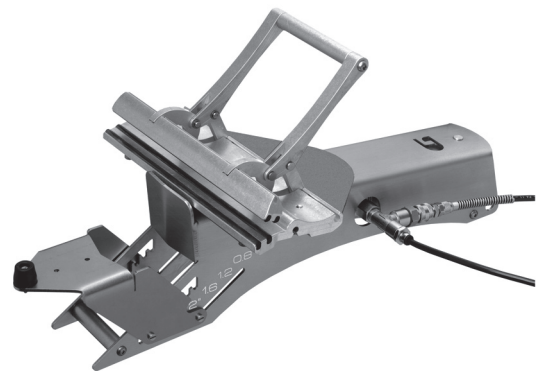
Execution A2

- In the automatic mode, the system offers you totally 50 freely programmable programs. Upon starting the machine, the mesh is stretched in a fully automatic manner.
- Up to 10 stretching cycles can be specified for each program.
- The stretching force is regulated for both axes independently from each other, by means of electro-pneumatic pressure converters.

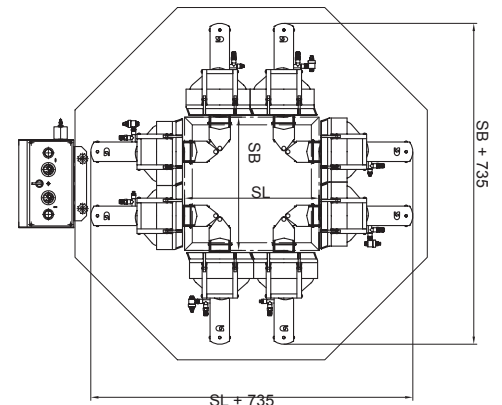
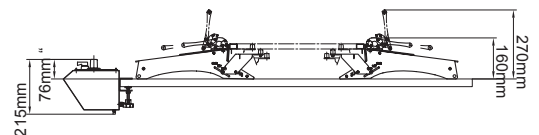


Option Z250

- The system can be expanded according to the requirements, in increments of 250 mm, by means of additional stretching clamps.



Single clamp	Length	mm	505
	Width	mm	260
	Weight	kg	5.5
	Stretching width	mm	250
	Frame profile height	mm	20-55
	Clamp travel distance	mm	80
	Maximum mesh tension	N	60
Control desk	Length	mm	420
	Width	mm	230
	Height (A1)	mm	200
	Height (A2)	mm	400
Power supply	Only required for execution A2		
	Voltage	V	1x230+N+PE 2x220+PE
	Frequency		50-60 Hz
Compressed air	Pressure	Bar	9
	Consumption per clamp	l/stroke	0.15
Permanent sound pressure level		dB (A)	<70



The machine is in compliance with the EU machinery directives (CE-conformity)

Technical changes are reserved
All measures in mm
February 2020