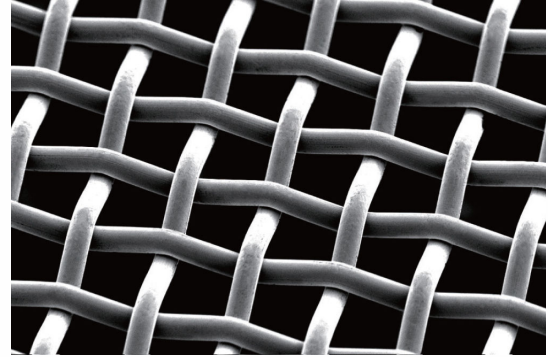


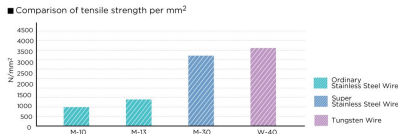
product solution

NBC M30 Metal Mesh

M-30 metal mesh has exceptionally low elongation and large mesh open area. It is woven with stainless steel wire with 3 times stronger tensile strength than that of standard stainless steel wire. It minimizes mesh interference to the print image while ensuring excellent paste transition. As a result, it is suitable for challenging applications utilizing high viscosity paste, such as solar cell, MLCC, LTCC and others.



PRODUCT IMAGES



Tensile Strength Comparison

ITEM DETAILS

MESH CODE	MESH COUNT /in	MESH COUNT /cm	WIRE DIAMETER μm	MESH OPENING μm	OPEN AREA %	Theoretical Ink Vol cm ³ /m ²	THICKNESS μm (normal)	THICKNESS μm (standard calender)	THICKNESS μm (heavy calender)	THICKNESS μm (super heavy calender)
M30-250-020 82/20	250	98	20	82	65	29	45±2	N/A	30	25
M30-290-020 68/20	290	114	20	68	60	27	45±2	N/A	30	25
M30-325-016 62/16	325	128	16	62	63	22	35±2	26	22	20
M30-360-016 55/16	360	142	16	55	60	22	36±2	26	22	20
M30-380-014 53/14	380	150	14	53	62	20	32±2	26	21	18
M30-430-013 46/13	430	169	13	46	61	18	29±2	N/A	21	17