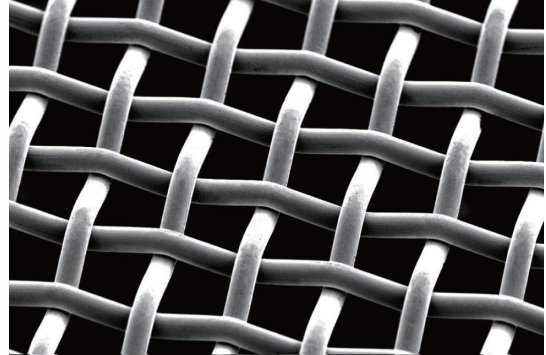


product solution

NBC W40 Metal Mesh

W-40 metal mesh is woven with tungsten wire, which has greater physical stability and print repeatability than even NBC super stainless steel wire mesh.



ITEM DETAILS

MESH CODE	MESH COUNT /in	MESH COUNT /cm	WIRE DIAMETER μm	MESH OPENING μm	OPEN AREA %	Theoretical Ink Vol cm^3/m^2	THICKNESS μm (normal)	THICKNESS μm (standard calender)	THICKNESS μm (heavy calender)	THICKNESS μm (super heavy calender)
W40-250-020 82/20	250	98	20	82	65	29	45 \pm 2	N/A	30	N/A
W40-290-020 68/20	290	114	20	68	60	27	46 \pm 2	N/A	30	N/A
W40-325-016 62/20	325	128	16	62	63	23	36 \pm 2	26	22	N/A
W40-380-014 53/16	380	150	14	53	62	20	32 \pm 2	26	21	18
W40-430-013 46/13	430	169	13	46	61	18	29 \pm 2	N/A	21	N/A